

## PRODUCT DESCRIPTION

- Impressive lighting of large rooms with high ceilings
- Bi-directional lighting (two-sided line of light)
- Possibility to mount vertically, horizontally or diagonally
- Can be used with up to 14mm wide LED strips
- Extended range of additional accessories

### FINISH :

Silver anodized

\*Custom colors available upon request



Fill empty fields

Product nr.

Fixture type

Company

Job name

Date

## TECHNICAL SPECIFICATION

### Application

- for decorating large rooms with high ceilings, e.g. interiors of public facilities (stations, shopping malls, theatres, libraries, staircases, etc.)
- for spatial light installations
- for the construction of linear lighting fixtures which illuminate at a wide light angle

### Assembly

- on cables and conductive rods, through end caps

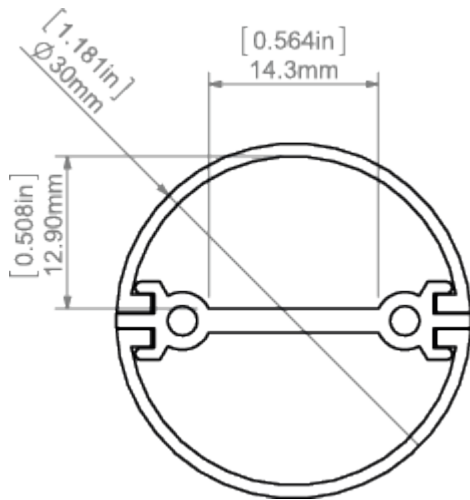
### Additional information

For lighting fixtures with increased power consumption and long suspension, it is recommended to use a conductive end cap with a hole through which a wire with a suitable gauge wire can be run.

- end caps firmly mounted with the use of bolts with decorative heads
- low voltage power
- durable structure
- very little aluminium visible
- large lighting surface
- space for LED strip: 14.3 mm

**AVAILABLE LENGTHS**

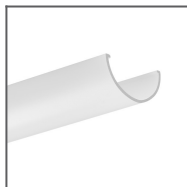
Ref. nr.	surface finish	available lengths
C0788ANODA_1	Silver anodized	1000mm
C0788ANODA_2	Silver anodized	2000mm
C0788ANODA_3	Silver anodized	3000mm

**TECHNICAL DRAWING**

## RELATED PRODUCTS

### COVERS

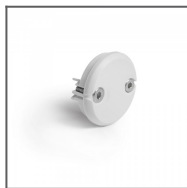
#### FROSTED COVERS



JAZ-DUO frosted  
Cover  
Ref: 17163

### END CAPS

#### REGULAR END CAPS

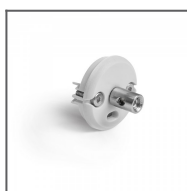


JAZ-DUO-N grey  
End cap  
Ref: 42641



JAZ-DUO-W grey  
End cap  
Ref: 42642

#### REGULAR END CAPS WITH HOLE

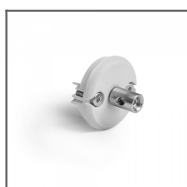


JAZ-DUO-N-OTW  
grey End cap  
Ref: 42644

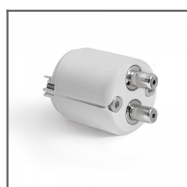


JAZ-DUO-N-FI-6,5  
grey End cap  
Ref: 42643

#### ELECTRICITY CONDUCTIVE END CAPS



JAZ-DUO-N grey  
electricity  
conductive End  
cap  
Ref: 42632



JAZ-DUO-W grey  
electricity  
conductive End  
cap  
Ref: 42633

## ACCESSORIES

### FASTENERS & MOUNTING ACCESSORIES



Isolated CU cable  
FI-1.35 mm  
Ref: 70310

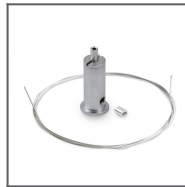
### MOUNTING SETS



RG-1 Fastener set  
black  
Ref: 42647L9005



RG-1 Fastener set  
silver  
Ref: 42647NI



RG-1 Fastener set  
silver satin  
Ref: 42647GSS

### SEALING COMPONENTS



6x1,2 Gland  
Ref: 00802

### MARKETING MATERIALS



Foam 70342  
Ref: 70342



Display  
P230-90173M  
Ref: 90173M